

# Windows 10



[Microsoft's Windows 10 Help Center](#)

Experiencing unexpected behavior on your Windows 10 computer? Try the built-in troubleshooter! Go to Settings > Update & Security > Troubleshoot. There are a number of troubleshooters that will look for fixes to common problems on things like internet connections, audio, and printers.

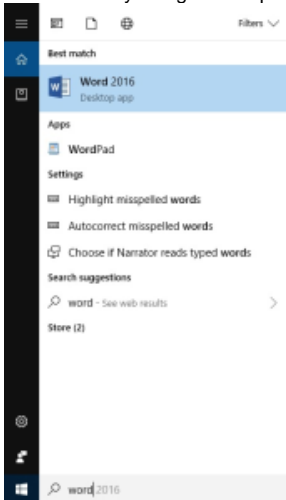
## What's New?

Please click on the topic(s) that interest(s) you to learn more.

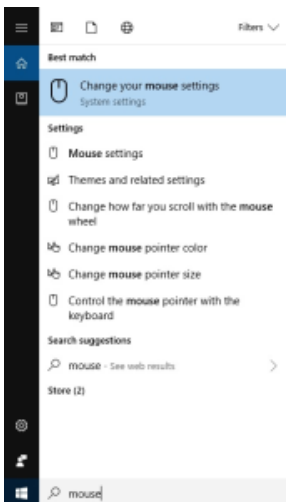
Windows will run a series of steps preparing the computer for you, so it will take a few minutes to log you in the first time on a new computer. There is now a Cortana search box next to the Start menu.



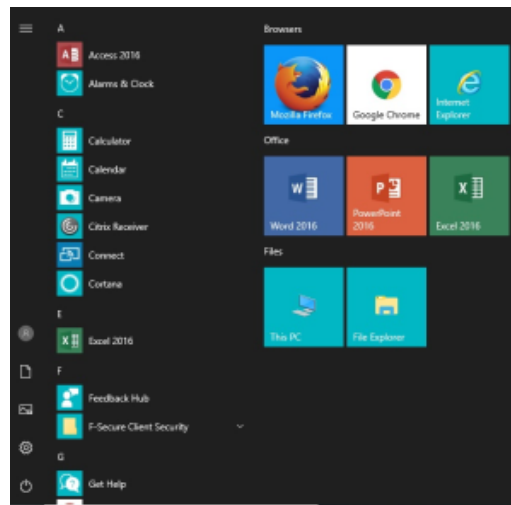
- You can easily navigate to a program you want - such as Word - by typing part of the name in the Search box and clicking on the right program.



- This will also work to navigate to things like Mouse settings.



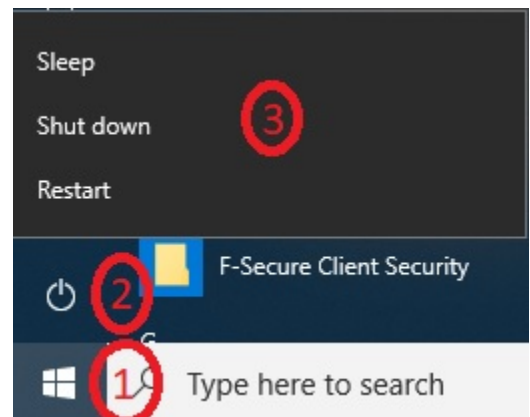
The Windows 10 Start menu now includes a mix of the classic Windows 7 menu and the active tiles introduced in Windows 8. Below is a picture of the new Start menu. You will find an alphabetical list of programs to the left, and tiles for the browsers and Office suite programs most commonly used on campus, as well as to This PC ("Computer" in Windows 7) and File Explorer (another way to access your files, especially ones you've used recently).



- A new way to organize [Start Menu](#) (Microsoft article)

To shut down, restart or put your Windows 10 computer to sleep:

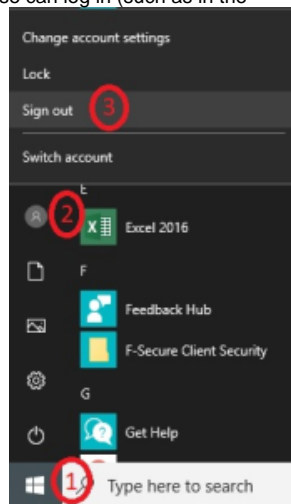
1. Open the Start Menu.
2. Click the power icon at the bottom of the left-most piece of the menu.
3. Choose Sleep (apps stay open, PC stay on, uses low power); Shut Down (Closes all apps and turns off the PC); or Restart (Closes all apps, turns off the PC, and then turns it on again).



To sign your account out of the computer so that someone else can log in (such as in the classroom):

1. Open the Start Menu.
2. Click the person icon at the top of the left-most piece of the menu.
3. Choose Sign Out.

- [This article from Windows Central](#) does a nice job of walking you through many of the options you may want to personalize when you start using Windows 10.
- To change the projection options, use the keyboard shortcut Windows key + P. This will pull up a list of options on the right side of your screen:
  - **PC screen only.** You'll see everything on your PC. (When you're connected to a wireless projector, this option changes to Disconnect.)
  - **Duplicate.** You'll see the same things on both screens.
  - **Extend.** You'll see everything across both screens, and you can drag and move items between the two.
  - **Second screen only.** You'll see everything on the connected screen. The other screen will be blank.



- Microsoft will be replacing Internet Explorer with a new browser, [Microsoft Edge](#)

## End of Support for Windows 7

Microsoft ended extended support for Windows 7, SP1 on January 14, 2020. See the [Windows lifecycle fact sheet](#) for more information.

Please see the [Upgrading to Windows 10 - What You Need to Know](#) page for more information about working with University Technology if you are still running Windows 7 on a Drew-issued computer.

Reviewed June 12, 2023